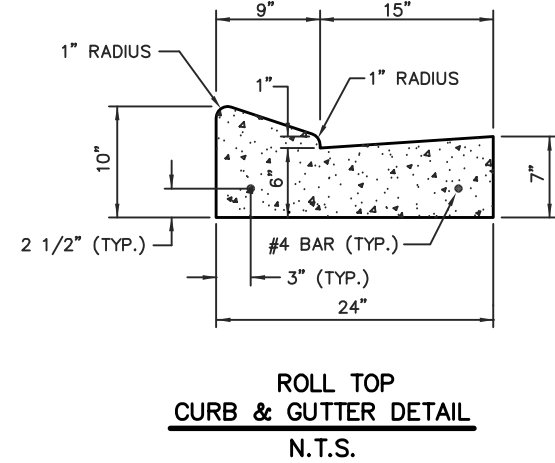
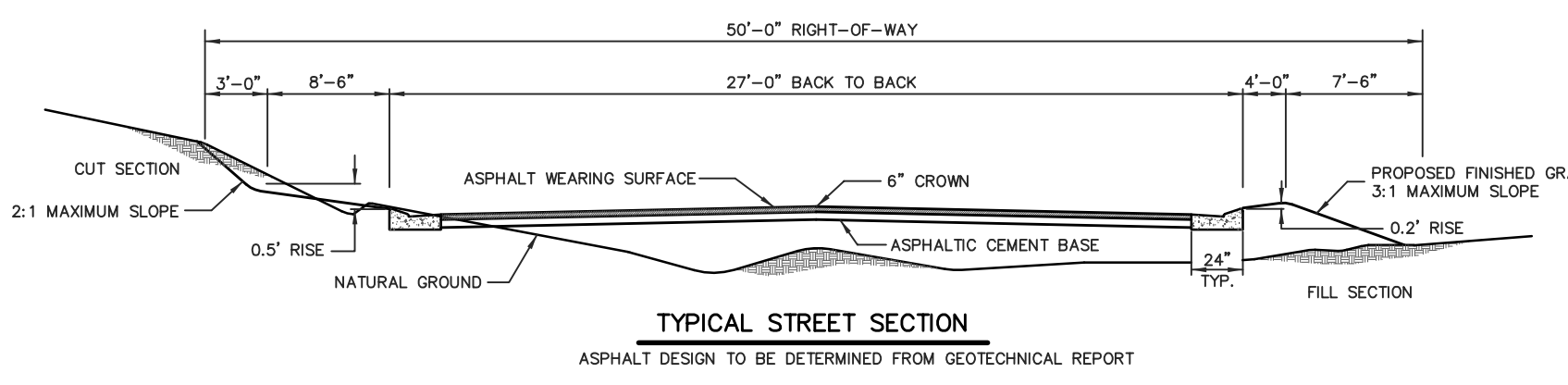
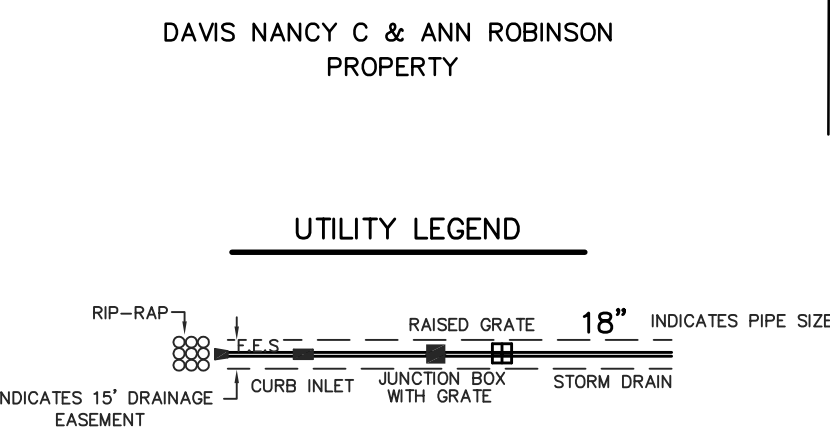
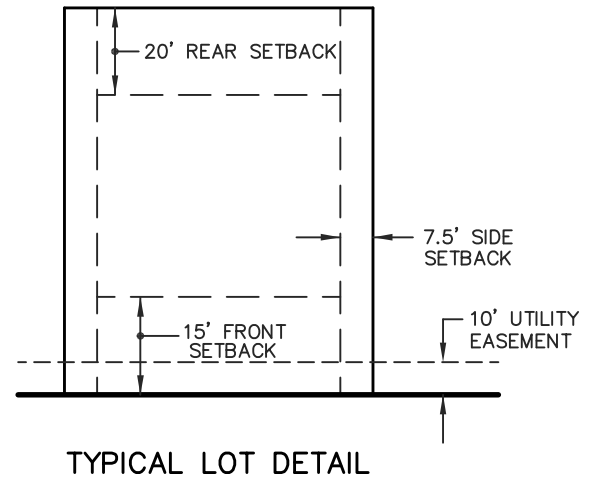
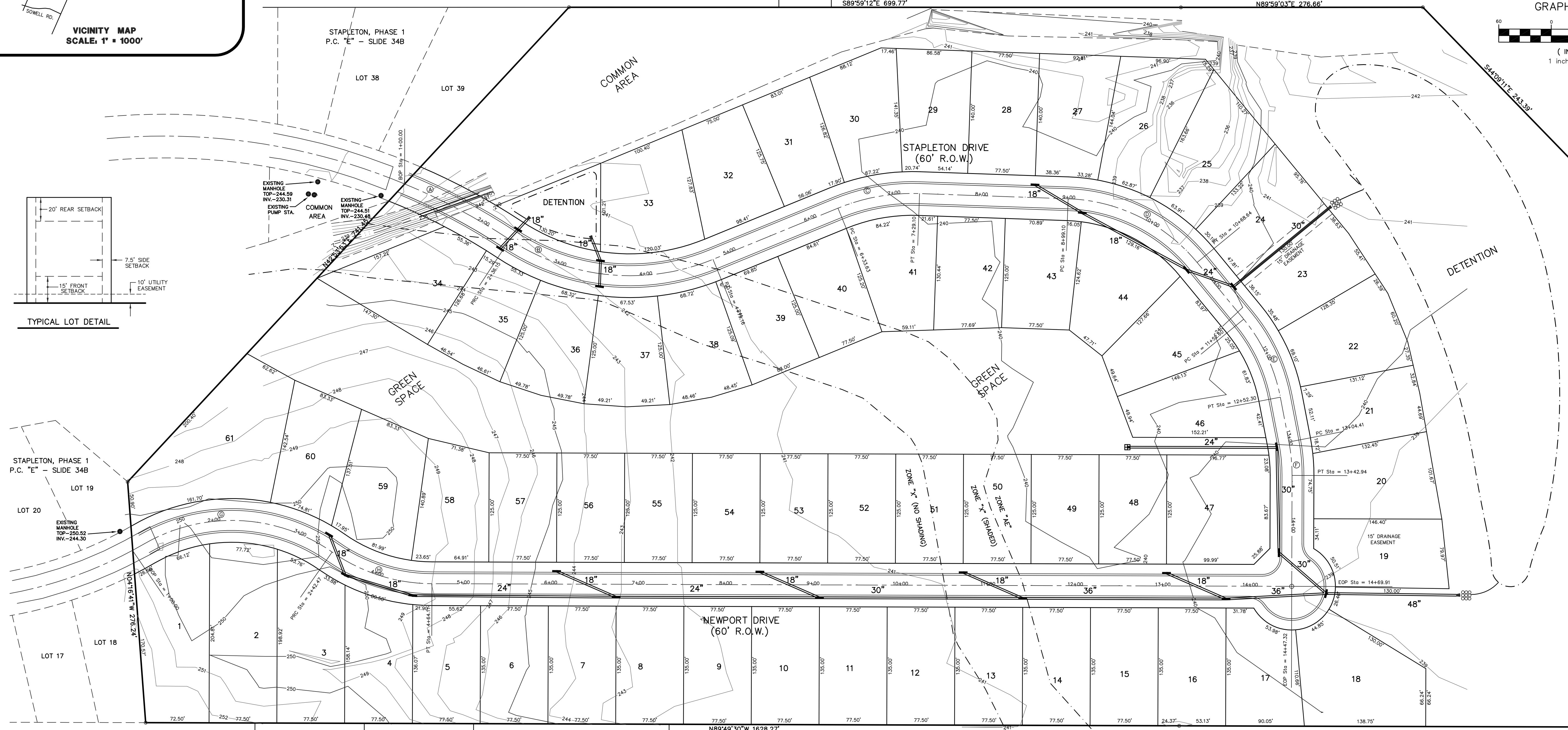
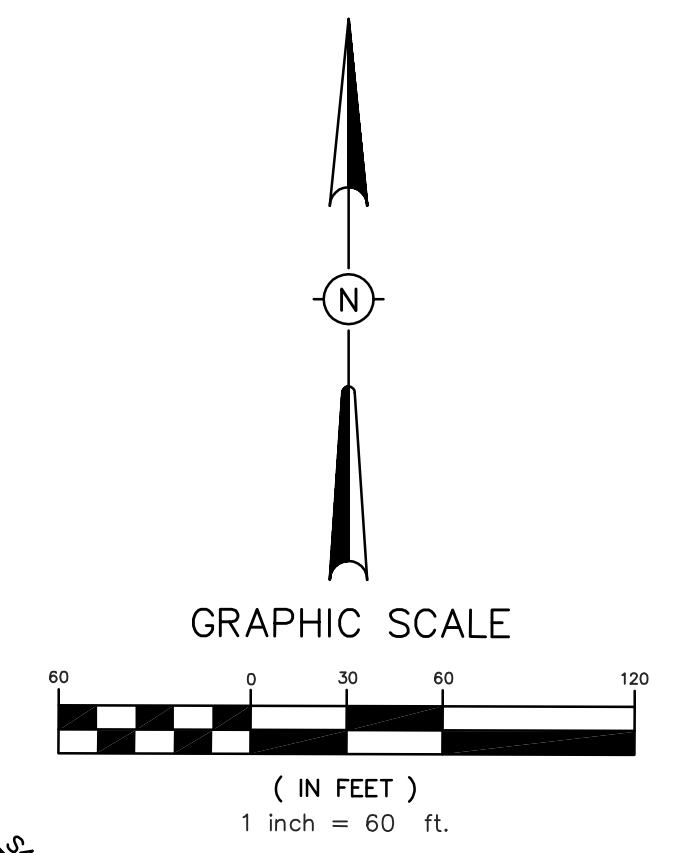


CENTERLINE CURVE DATA

④ Δ = 10°51'43"	⑥ Δ = 55°41'41"	⑧ Δ = 24°18'37"	⑩ Δ = 48°34'0"
D = 7.97880'	D = 22.91831'	D = 25.46480'	D = 28.64789'
R = 718.10'	R = 230.00'	R = 225.00'	R = 200.00'
L = 136.15'	L = 136.15'	L = 63.47'	L = 103.54'
⑬ Δ = 28°33'39"	⑮ Δ = 11°02'19"	⑰ Δ = 65°06'39"	⑲ Δ = 34°50'50"
D = 28.64789'	D = 28.64789'	D = 28.64789'	D = 28.64789'
R = 200.00'	R = 200.00'	R = 200.00'	R = 200.00'
L = 99.70'	L = 38.53'	L = 227.28'	L = 121.64'



- NOTES:**
- THIS SUBDIVISION LIES WITHIN THE LIMITS ESTABLISHED FOR ZONES "AE", "X" (SHADED AND NO SHADING) ACCORDING TO FIRM MAP NUMBERS 28089C0415 F AND 28089C0420 F, EFFECTIVE MARCH 17, 2010.
 - DIMENSIONS ALONG CURVES ARE CHORD DISTANCES.
 - AREA = 27.55 ACRES +/-, MORE OR LESS.
 - CONCRETE MONUMENTS WILL BE PLACED AT ALL CORNERS OF THE SUBDIVISION POST-CONSTRUCTION.
 - COMMON AREAS AND EASEMENTS SHALL BE MAINTAINED BY THE HOME OWNERS ASSN. OR ADJACENT LOT OWNER, WHICHEVER IS APPLICABLE AS OUTLINED IN THE COVENANTS.
 - DATE OF FIELD SURVEY: 11-19-18
 - CONTOURS SHOWN ARE FROM A FIELD TOPOGRAPHIC SURVEY AND MSL. (NAVD 88 DATUM).
 - SEWER AND WATER TO BE PROVIDED BY BEAR CREEK WATER ASSN.

DEVELOPER
BERRY CONSTRUCTION & RENOVATION, LLC
 188 MAIN STREET, SUITE C, #112
 MADISON MISSISSIPPI, 39110

DRAWING NO. TRCT-B-5

H D LANG AND ASSOCIATES, INC.
 POST OFFICE BOX 16085
 JACKSON, MISSISSIPPI 39236
 601-362-4886

PROJECT
 PRELIMINARY PLAT
 OF
THE LAKES AT STAPLETON

LOCATION
 SITUATED IN THE
 NORTHEAST 1/4 OF SECTION 14,
 TOWNSHIP 8 NORTH - RANGE 2 EAST
 MADISON COUNTY, MISSISSIPPI

DATE	REVISION	BY	DRAWN BY: D.L.M.
7-31-19	REVISED PER COUNTY COMMENTS	D.L.M.	DATE: 5-1-19
			SCALE: 1" = 60'
			BOOK: PAGE:
			PROJECT NO.: 17-047